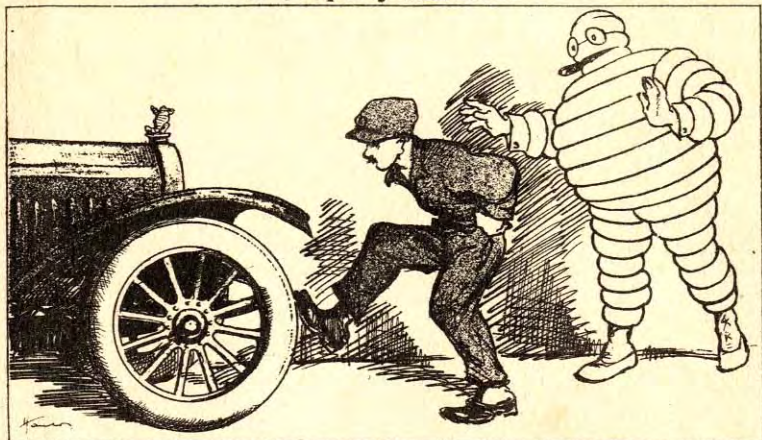


A word in season
from
Bibendum

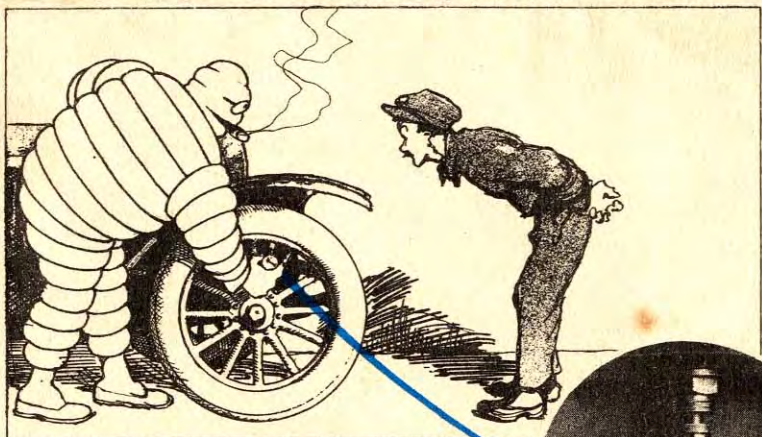
Correct inflation.



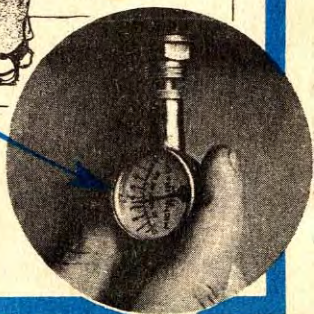
How to tell whether a tyre is properly inflated.



No motorist, however experienced, can tell the pressure of a tyre by its appearance in contact with the ground, by feeling it with the hand, or by kicking it.

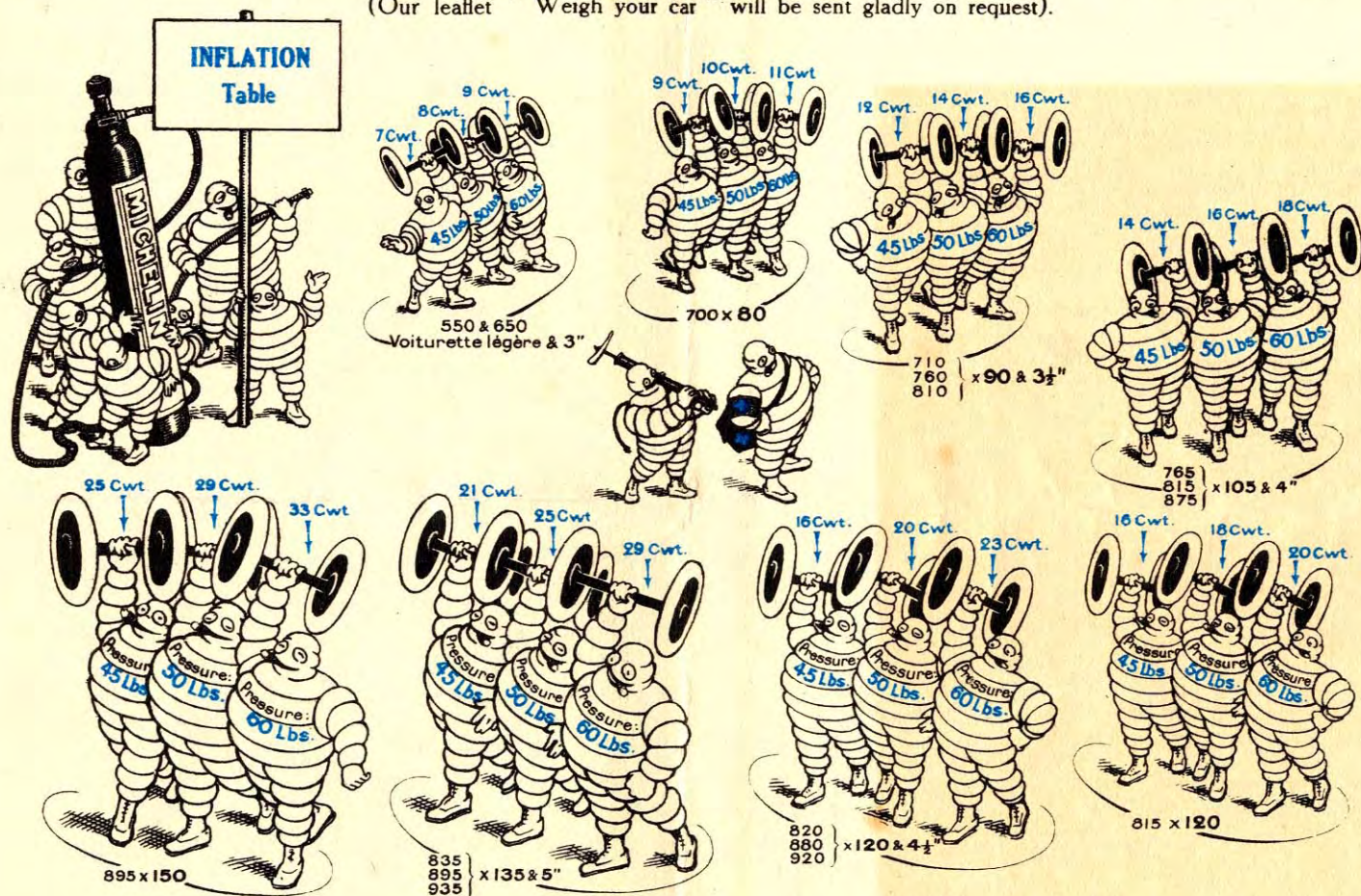


The only practical and safe method is to check the pressure with the **Michelin Pressure Tester** with fixable pointer.



To use this table correctly, it is essential to know the weight carried by each axle of your car, fully loaded.

(Our leaflet "Weigh your car" will be sent gladly on request).



Example : Car fitted with 815×105 tyres, carrying a weight of 16 cwt. on rear axle and 14 cwt. on front axle. Look under 105 section Bibendums, where the pressure required under these loads will be seen to be 50 and 45 lbs, for rear and front tyres respectively. All intermediate weights should be reckoned as belonging to the next higher figure.

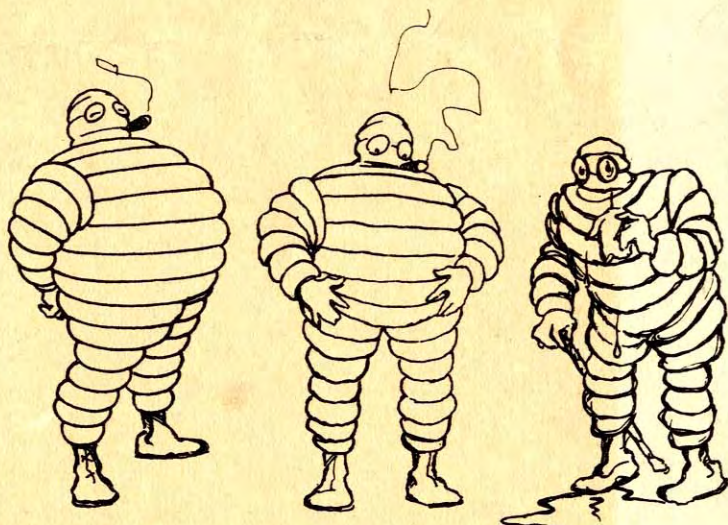
N.-B. — In order to carry a load per axle of 12 cwt. on the 80 section, 21 cwt. on the 815×120, 31 cwt. on the 135, or 35 cwt. on the 150, inflate to 70 lbs. In all other cases where a weight exceeding the maximum (specified in the table above) is to be carried, fit a larger rim and tyre.

Even without any accidental leak, a tyre will gradually go down.

A tube will lose five or six pounds during the fortnight following its first inflation : after two months it will have fallen as much as 20 lbs.

This is why it is essential to check and correct pressures regularly, whenever you oil or grease the car. A few strokes with the pump will be enough.

Verify pressures frequently with the Michelin Pressure Tester.



The joyous day of inflation.

A month later.

Three months later.

A tragedy of neglect in three stages.

The life of a tyre depends on its quality :

- Michelin sees to this,

and on its correct inflation :

- you and only you can see to that.

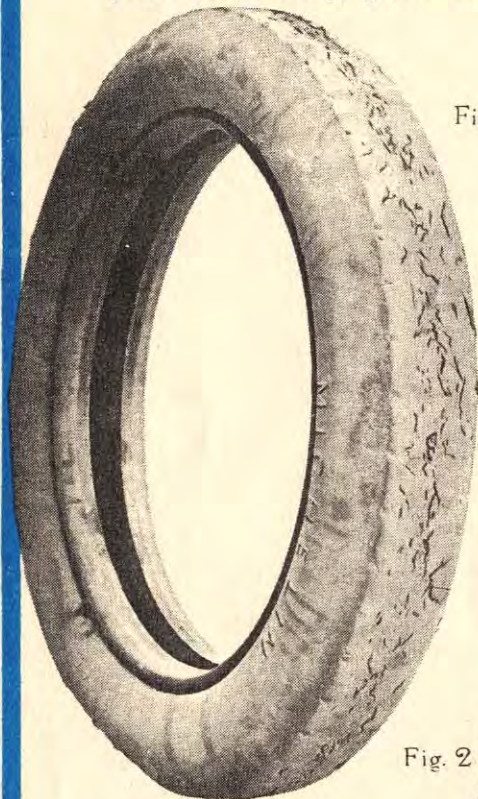


Fig. 1

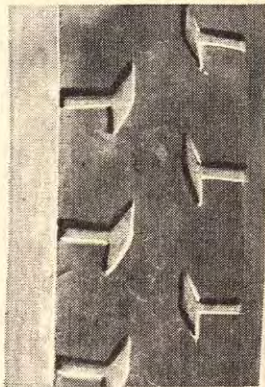
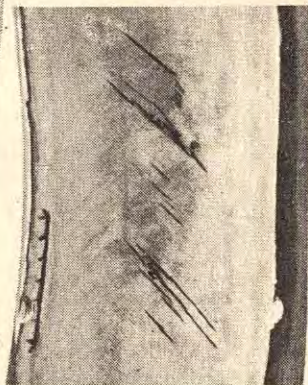


Fig. 2



A tyre which has been kept up to the proper pressure.

The tread is worn away down to the foundation, the pattern is practically obliterated, but the tyre has not burst in spite of an enormous mileage.

A tyre which has been run under-inflated.

The tread (fig. 1) is hardly worn, but the foundation has suffered to such an extent that, although the cover has done only a quarter of the mileage done by the one on the left, it is liable to burst at any moment.



EXTRACT FROM
PRICE LIST *15th November, 1923*

MICHELIN

Motor Car Tyres and Accessories

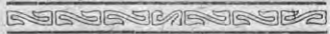


GOLLIN & CO. Pty. Ltd.
Michelin Warehousemen
Melbourne, Sydney, Adelaide
and Brisbane

For Conditions of Sale see our
General PRICE LIST



AR20-90M/2/24



MICHELIN INFLATION TABLE.

| Section | Maxim. Weight per Axle | Weight Carried per Axle | Pressure per sq. inch |
|-----------------------|------------------------|-------------------------|-----------------------|
| Voiturette Legere. | SINGLE 9 Cwts. | TYRES 7 Cwts. | 45 Lbs. |
| | | 8 | 50 |
| | | 9 | 60 |
| 80 & 3" | 12 | 9 | 45 |
| | | 10 | 50 |
| | | 11 | 60 |
| 90 & 3½" | 16 | 12 | 45 |
| | | 14 | 50 |
| | | 16 | 60 |
| 105 & 4" | 18 | 14 | 45 |
| | | 16 | 50 |
| | | 18 | 60 |
| 815 x 120 | 21 | 16 | 45 |
| | | 18 | 50 |
| | | 20 | 60 |
| 120 & 4½" | 23 | 16 | 45 |
| | | 20 | 50 |
| | | 23 | 60 |
| 135 & 5" | 31 | 21 | 45 |
| | | 25 | 50 |
| | | 29 | 60 |
| 150 | 35 | 25 | 45 |
| | | 29 | 50 |
| | | 33 | 60 |
| 155 & 6" | 43 | 31 | 60 |
| | | 37 | 75 |
| | | 43 | 80 |
| 185 | 59 | 39 | 50 |
| | | 43 | 60 |
| | | 51 | 75 |
| | | 59 | 80 |

For a maximum of 21 cwts. on 815 x 120 } Inflate to
 31 - - - 135 } 70 lbs.
 35 - - - 895 x 150 } per sq. in.

You inspect your batteries at least once every fortnight. At the same time inspect the pressure of your tyres. Use a Michelin Pressure Tester.

^A CABLE CORD COVERS being OVERSIZES in themselves, should only be fitted to rims of the same size as the Covers, and should not be fitted as oversizes to rims of smaller sizes, as is done with Fabric Tyres. The Following Exceptions are allowed :-

| A Rim of | Will Take a Cover | Cable | With Tube of |
|-----------|-------------------|----------------|--------------|
| 815 x 105 | | 815 x 120 | 815 x 120 |
| 895 x 135 | | 895 x 150 | 895 x 150 |
| 30 x 3½SS | | 31 x 4 SS Cord | 31 x 4 |
| 32 x 3½SS | | 33 x 4 " " | 33 x 4 |
| 32 x 4SS | | 33 x 4½ " " | 33 x 4½ |
| 33 x 4 | | 34 x 4½ " " | 34 x 4½ |
| 32 x 4½SS | | 33 x 5 " " | 33 x 5 |
| 34 x 4½ | | 35 x 5 " " | 35 x 5 |
| 26 x 4½ | | 37 x 5 " " | 37 x 5 |
| 26 x 4 | | 38 x 7 " " | 38 x 7 |